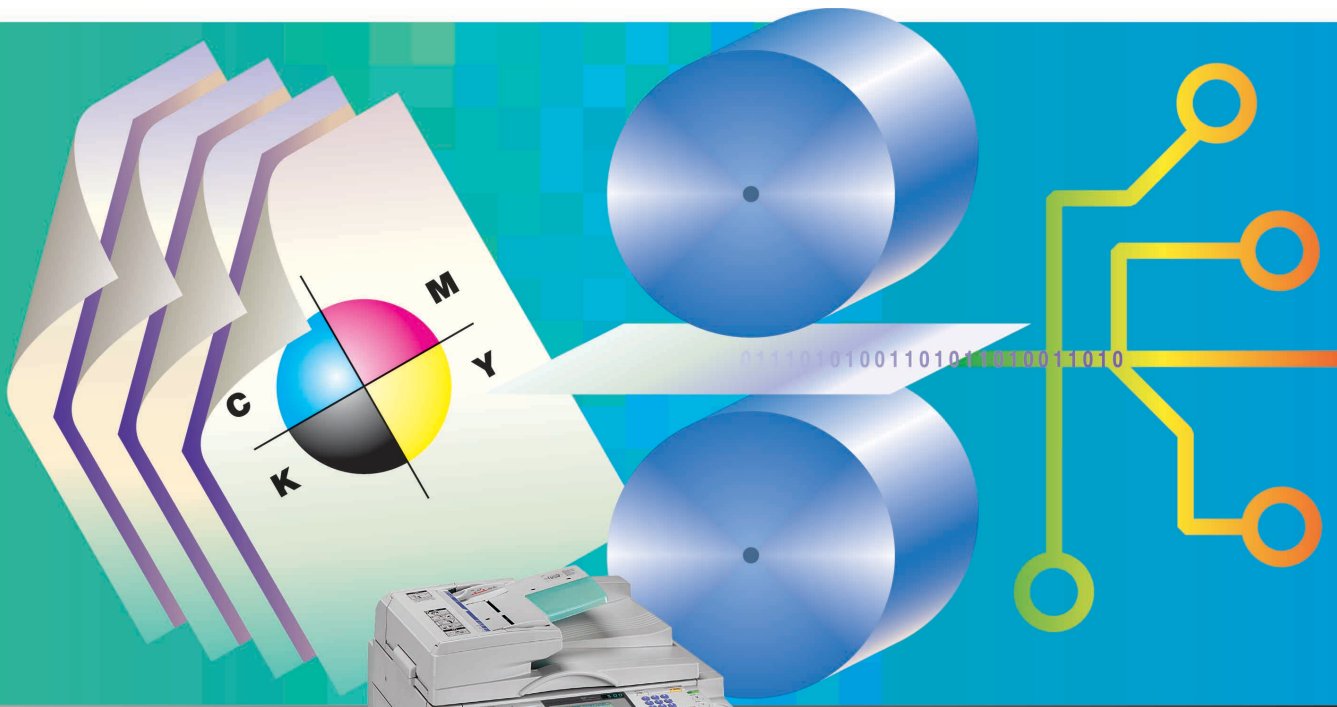


RICOH SERIPRINTER MODEL 25

Print Production System

DIGITAL PRINTING



Bringing Affordability to Short-Run Printing

RICOH[®]

RICOH SERIPRINTER MODEL 25



Print Production System

Raising Digital Duplicator Performance

Imagine expanding the capabilities of a digital duplicator to match the versatility and production values that you expect! With the breakthrough SeriPrinter™ Model 25, businesses and organizations like yours can do just that!

By coupling the ground-breaking technology of this print system with your existing digital duplicator and TC-II Production Printer, you can immediately benefit from high-volume production with quality printing in either full color (CMYK) or standard spot colors! The only manufacturer to bring such high-powered, affordable production to the digital imaging marketplace has taken the operation of digital duplicators to incredible new heights.



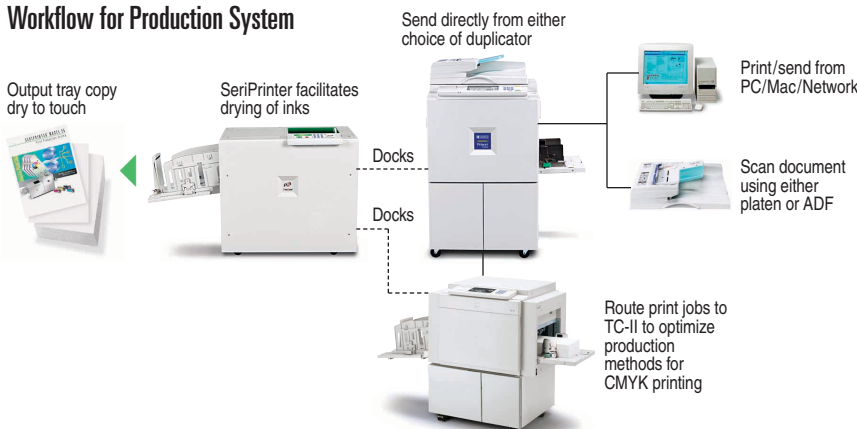
The No-Smudge Solution. Advanced engineering enables the Model 25 to completely eliminate ink smudging and offsetting no matter what the type of stock selected. Because the specially-formulated resin-based ink is fully cured and dried as the paper exits the unit, there is no need to wait between color passes. Now four-color printing of intricate production jobs can be produced clearly and seamlessly, whether your job entails embossing or requires the use of specialty papers, cardstock or envelopes.

Smart Technology Means More for Less. The SeriPrinter Model 25 brings low-cost, full-color process printing within your reach by utilizing enhanced digital technology in a copier-like print engine. Unlike other output methods, both speed and printing pressure can be adjusted to accommodate the type of stock for more accurate results. A unique vacuum process works in conjunction with your existing digital system throughput technology to maintain exacting registration.

Full Color at a Fraction of the Cost. By incorporating the SeriPrinter Model 25 into your print production operations, you are not only saving on the upfront investment versus purchasing a more advanced four-color press; you will also enjoy continual full-color output at a cost per copy that's literally a fraction of other digital systems. Because no extensive plate-making, chemical cleaning, or costly toner is involved, short-run users can now reap big production benefits!



Workflow for Production System



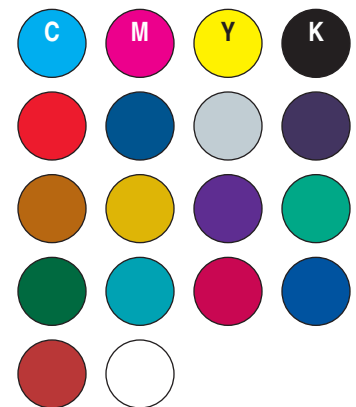
Specifications

Connectable Availability	Priport JP8500 & JP5500 digital duplicators and TC-II Digital Production Printer
Paper Handling System	Variable speed belt transfer with internal vacuum mechanism
Paper Sizes	Min. 2.8" x 5.8"; Max. 12.8" x 17.6"
Paper Weights	13 lb. Bond – 110 lb. Index, Envelopes, Vellum, Mylar, Tyvek & matted-finish glossy
Print Speeds	60 – 120 ppm based on duplicator configuration
Paper Delivery Capacity	1,000 sheets (based on 20 lb. Bond)
Roll On/Roll Off Installation	Easy mobility with adjustable height guides
Unit Console Timers	For copies, lamp hours (running totals)
Drying Mechanism	Ink polymerization
Drying Unit	2 on-board variable watt lamps (Min: 250W; Max. 650W)
Power Source	120V, 60Hz, 2.4A
Power Consumption	1,617 W
Noise Emission	Less than 60 dB
Dimensions (WxDxH)	30.9" x 22.0" x 29.1"
Weight	176.0 lbs.

Ink Color Choices

Current Standard Colors

(Colors noted are approximations of actual inks)



Custom Colors

Customized exact match PMS® colors available on demand



Printed in U.S.A. on recycled paper because Ricoh cares

Ricoh is a registered trademark of Ricoh Company, Ltd. All other trademarks are the property of their respective owners. © Ricoh Corporation Ricoh reserves the right to modify any standard ink choices without notice. Specifications and external appearance are subject to change without notice.

Ricoh Corporation, Five Dedrick Place, West Caldwell, NJ 07006
Phone: (973) 882-2000 Website: <http://www.ricoh-usa.com>

CA-0330